

DESIGN MANUAL FOR LOCKERBASKETS®

Moore Overhead Clothes Storage System



The Moore Company, Inc.
P.O. Box 3570
Charleston, WV 25337 USA
Phone: 304-344-8024
Fax: 304-344-8025

www.moorecompany.com

© The Moore Company 2014

TABLE OF CONTENTS

About this Design Manual	1
Patent and Copyright Statements and Disclosure	1
Warnings	2
Architectural Design Standards	
Mine and Industrial Changerooms	3-5
Architectural Design Standards for Overhead Clothes Storage System.....	6-7
Moorframe® Technical Data	
Moorframe® as Collector Rail Span Table.....	8
Moorframe® Connecting and Attachment Details.....	9-10
Plan and Elevation — and Moorframe® Layouts.....	11-18
Locker/LOCKERBASKET® Design Combination.....	19-23
Changeroom Layout Procedures Using AutoCAD or Dot Matrix Layout	24
Dot Matrix Layout	25
Standard LOCKERBASKET® Specifications	
Short Form.....	26
Long Form	26-28



ABOUT THIS DESIGN MANUAL

This Design Manual will provides guidelines to assist the design professional in laying out an industrial changeroom facility using overhead clothes storage systems manufactured by The Moore Company, Inc. The Moore LOCKERBASKET® System is designed to be easily installed in a steel, concrete or wooden framed industrial type building and in transportable type buildings for temporary or remote mining locations throughout the world.

Overhead storage and wall lockers are the only two secure methods of storing employees clothing and personal effects.

In industries where the employees work in conditions of heat, dampness, dust or contaminants (i.e. mining, foundries, steel mills, glass plants, paper mills, tunnel projects, chemical plants) it is imperative that employees' work clothes be suspended full length in moving currents of warm air to properly dry. The LOCKERBASKET® System is the only clothes storage system that allows clothing to properly dry and aerate through the circulation of warm, fresh air to render them comfortable to wear on the next shift.

This superior clothes storage system provides real COST BENEFIT to the company. The use of overhead LOCKERBASKETS® substantially reduces floor area requirements by utilizing wasted overhead ceiling space, saving up to 40% on changeroom construction costs; PLUS continued economics are realized over the entire life of the facility in **heating, lighting and cleaning expenses.**

It is the Design Professional's responsibility to consider the point loads caused by the reaction of the collector rail in the LOCKERBASKET® System for each changeroom. The design professional must also separately design the structure that will house the changeroom facilities, including the roof structure, to withstand loads of a loaded LOCKERBASKET® in addition to the roof loads determined from appropriate building codes or the International Building Code 2000, local building codes and specific site conditions.

All structures require a ceiling height of 16'-0" (4.8 meters) in the basket area except in the case of light industries where 14'-0" is acceptable. As a rule of thumb when using LOCKERBASKETS®, the interior floor area requires approximately 5.5 SF (.51 sq. meters) of floor area per employee using the changeroom and an estimated 8'-0" SF (.74 sq. meters) per employee when including toilets, showers, and lavatories, lighting and air changing requirements. You can refer to the Architectural Standards and the Engineering Design section in the Design Manual for further details.

It is also important that the design professional's layout does not conflict with new or existing overhead ducts, electrical, framing, plumbing, structural framing or other such obstructions.

We encourage you to visit our website at www.moorecompany.com. It offers helpful information for engineering, detailing, technical, marketing, and purchasing and installation personnel. Our website also puts you in contact with a Moore Company representative to assist in addressing your needs for your new project or existing changeroom facility.

PATENT AND COPYRIGHT STATEMENTS AND DISCLOSURE

The Moore Company, Inc. has been awarded and maintains numerous patents, trademarks and copyrights for its overhead clothes storage system and product literature by the United States of America and foreign countries. All products and literature are appropriately marked. For your protection, please ensure that all products purchased for your industrial changeroom are genuine Moore Company parts.

LOCKERBASKET®, LOCKERBASKETS®, MOORFRAME® and ALUMIBENCH® are all registered trademarks belonging to The Moore Company.





WARNING

FAILURE TO READ AND COMPLY WITH THESE INSTRUCTIONS OR ANY ONE OF THE LIMITATIONS NOTED HEREIN CAN RESULT IN SERIOUS BODILY INJURY OR DEATH, AND/OR PROPERTY DAMAGE.

THESE INSTRUCTIONS ARE OF THE LAYOUT OF THE Moore LOCKERBASKET® SYSTEM. ALL REFERENCES TO THE SYSTEM OR ANCHOR POINTS MEAN THE MOORE LOCKERBASKET® SYSTEM AND THE MOORFRAME® IN THE MOORE LOCKERBASKET® SYSTEM. THE INDIVIDUAL PARTS AND THE SYSTEM ARE NOT DESIGNED OR INTENDED FOR ANY PURPOSE OTHER THAN IN THE MOORE LOCKERBASKET® SYSTEM AND ONLY IN ACCORDANCE WITH THE INSTALLATION INSTRUCTIONS FOR THE LOCKERBASKET® SYSTEM AND THESE INSTRUCTIONS.

IT IS THE RESPONSIBILITY OF THE OWNER AND PLANT OPERATOR, AND THEIR DESIGN PROFESSIONALS, to ensure that the installation of the LOCKERBASKET® System and all of its components is in accordance with The Moore Company Installation Instructions, Use & Maintenance Instructions, Operator and Service Instructions, these guidelines, and with all applicable laws, safety rules and standards, including all safety rules and regulations of the Occupational Safety & Health Administration (OSHA) (<http://www.osha.gov>) and Mining Safety & Health Administration (MSHA) (<http://www.msha.gov>), all State, Province and local safety rules, regulations and building codes, and applicable ANSI/ASME Standards. It is also the responsibility of the owner and plant/mine operator and their design professionals, to be certain that the structure of the building to which the LOCKERBASKET® System will be attached is appropriate for and will safely and reliably hold the LOCKERBASKET® overhead clothes storage system. Design professional should specify that only qualified installers should be permitted to install the system.

IT IS THE RESPONSIBILITY OF THE OWNER AND OPERATOR AND THEIR DESIGN PROFESSIONALS to be certain that the LOCKERBASKET® System is properly maintained and serviced at all times in compliance with The Moore Company Installation Instructions, Use and Maintenance Instructions, Operating and Service Instructions, and these instructions and Warnings, and with all applicable laws, safety rules and standards, including all applicable safety rules and regulations of OSHA and MSHA, all State and Local Safety Rules, regulations and building codes and applicable ANSI/ASME standards.



ARCHITECTURAL DESIGN STANDARDS

Mine and Industrial Changerooms

MODIFICATIONS

The Moore Company has made every attempt to comply with changerroom design standards from all known government agencies and industrial organizations to develop this guide to designing the changerroom structures that will provide your customer with the most modern changerroom facilities possible today. Value-added engineering was a consideration throughout the development of these standards; however, no compromise was made in the underlying regulations dictated by the regulatory agencies or in delivering the employees comfortable, modern, sanitary and hygienic changerroom facilities.

There are circumstances where the design standards may vary. We have noted these differences in the design standards and have provided solutions for adapting the overhead clothes storage system into these known cultural preferences. Current national or local regulations may be more lenient or more stringent in certain areas than the changerroom standards compiled herein. Regulations of agencies supervising the structure under consideration should be reviewed prior to final design.

The following Changerroom Building Standards, except where noted, have been compiled from governmental agencies and industrial organizations as a guide in designing changerroom structures, in addition to aiding in the compliance with Mine Safety and Health Administration regulations. (MSHA) and OSHA Standards 29 CFR 1926/1910, OSHA 2207, 1983 and OSHA 2206, Revised June 1981.

The Moore Company's personnel will assist the owner and/or the architect/engineer, at NO CHARGE, in developing layouts for standard and adaptive designs incorporating cultural design preferences, while incorporating the health and cost advantages that only overhead clothes storage can provide.

GENERAL

1. Clothes changerrooms, showers and toilet rooms should be provided for personnel and only potable water shall be provided for drinking, washing of the person or other sanitary uses.
2. Number of persons noted below per shower, toilet, and lavatory refers to the maximum number of employees present at any one time on a regular shift.

STRUCTURES

1. Must comply with requirements of Local and State Building Codes. If none, we recommend that the structure should comply with the International Building Code 2000.
2. Disposal and treatment of waste discharge from sanitary facilities shall comply with applicable Local regulations, or applicable regulations of the governing Environmental Protection Agency.
3. Floors and walls shall resist moisture absorption and permit easy cleaning.



SHOWERS

1. In industries where dirt is a problem (i.e. Mining), a minimum of one (1) showerhead for each five (5) persons on a single shift should be available. In cleaner industries (i.e. fiberglass), a minimum of one (1) showerhead for each ten (10) persons on a single shift should be available.
2. Soap must be provided at each shower.
3. Minimum of nine (9) square feet shower room floor space for each showerhead. Floor shall have non-slip surface, sloping toward the drain approximately 1/4": 1'-0" (6.35 mm: 305 mm)
4. In installations which desire additional privacy, showers shall be individual units with attached changing stall enclosures equipped with appropriate privacy curtain or door, bench and wall hooks for hanging soiled and clean clothes separately.

TOILETS

1. Approximately one (1) flush toilet for each ten (10) persons on a single shift.
2. With shifts of thirty (30) or more men, urinals are allowed up to a ratio of two (2) toilets to one (1) urinal. Two (2) feet (610 mm) of trough urinal equals one individual urinal.
3. Individual toilet compartments, toilet paper and toilet paper dispensers required.

LAVATORIES

1. Provide approximately one (1) lavatory for each ten (10) persons, or portion thereof, for up to 100 persons on a single shift. For over 100 persons, provide one (1) lavatory for each additional fifteen (15) persons or portions thereof. Twenty (20) perimeter inches (500 mm) of wash sink, equivalent to one lavatory. Each lavatory must be supplied with hot and cold water, and the water temperature of each lavatory shall be adjustable.
2. Soap shall be provided at each lavatory.
3. Individual towels, cloth or paper, or warm air blowers to be provided.

CLOTHES STORAGE DEVICES

1. Provide individual clothes storage devices for each person's clothing and incidental personal belongings during and between shifts.
2. Aeration and Drying: When employees' clothing becomes damp from perspiration or wet during the work shift, overhead clothes storage units, or floor lockers equipped with forced warm air circulation to EACH individual locker, should be employed to ensure that such clothes are aerated before use.

LIGHTING

1. Artificial lighting should provide a level of 20-foot candles in the changeroom area and 30 foot candles in the toilet wash and shower sections.
2. Placement of lighting on the peripheral walls approximately 8'-0"-10'-0" (2438 mm – 3048 mm) above the floor provides most efficient lighting arrangement.



VENTILATION

1. Changerooms shall be provided with mechanical ventilation at a recommended rate of six (6) air changes per hour when the facility is in use and four (4) air changes per hour during the interim periods. It is recommended that humidity not exceed 65%.

FLOOR CONSTRUCTION REQUIREMENTS

1. Floors should be constructed with a non-skid surface (trowel smoothed) to provide sure footing, and must be impervious to water. A minimum slope of 1/8": 1'-0" (3.18 mm : 305 mm) is recommended for proper drainage in the changerroom area.

GENERAL REQUIREMENTS AND CONSIDERATIONS

1. A lighter color wall and floor yields a brighter changerroom.
2. Conveniently located refuse containers shall be in changerrooms.
3. Temperature should be a minimum of 68° Fahrenheit (20 Celsius).
4. Entrances shall be constructed to prevent entrance of rodents, insects or other vermin.
5. Bulletin Boards should be provided.
6. LOCKERBASKET® Operating and Service Instructions Placard should be posted in changerroom at each entrance or in conspicuous places.



ARCHITECTURAL DESIGN STANDARDS FOR Overhead Clothes Storage Systems

The following design standards for OVERHEAD CLOTHES STORAGE SYSTEMS have been developed with architects and engineers to provide a spacious, open changeroom, while giving maximum use of valuable floor space. These design standards are the Manufacturer's acceptable minimum, subject to Specification by the Design Engineer.

LOCKERBASKET SPACING

Recommended spacing of LOCKERBASKETS® is on 24" (610 mm) centers. This allows generous clearance between LOCKERBASKETS® for free circulation of air through garments. For ease of layout, normally LOCKERBASKETS®, locking rail bench units and overhead supports are spaced on modules of 24" (610 mm).

AISLE SPACES

Aisle spaces are not required with Moore LOCKERBASKETS® except for the main aisles through the changeroom. Experience has shown that raising and lowering of LOCKERBASKETS® occurs in such ratios that the entire ceiling, except for the main aisles, may be employed for LOCKERBASKET® support.

LOCKING RAIL – BENCH SPACING

Generally, the most economical layout will have locking rails spaced either on 14'-0" (4270 mm) centers giving 6 rows of LOCKERBASKETS® between locking rails, or on 10'-0" (3050 mm) centers to give four rows of LOCKERBASKETS® between locking rails.

CEILING HEIGHTS

A. Recommended distance from finished floor to bottom of roof support purlins:

- **Recommended: Preferred height is 16'-0" (4876 mm).**
(Gives a clear height between floor and overhead clothes storage system of 10'-4" (3139 mm).
- **Optional: 15'-0" (4572 mm) for smaller changerooms only**
(Gives normal clear height between floor and overhead clothes storage system of 9'-4" (2835 mm).
- **Minimum: 14'-0" (4270 mm) for light industries only.**

B. In rigid-frame structures, the length of the cable is adjusted to allow all LOCKERBASKETS® to hang at the same level, giving the effective ceiling heights desired by the architect or engineer. (See detail on following pages.)

CLEARANCE REQUIREMENTS

2'-0" (610 mm) recommended distance from centerline of LOCKERBASKETS® to locking rail and 1'-0" (305 mm) from walls or partitions.



OVERHEAD SUPPORTS

MOORFRAME®, the prefabricated overhead framing member, supports the overhead clothes storage system on clear spans up to 8'-0" (2440 mm) without bridging and to a maximum of 10'-0" (3050 mm) with bridging (see span chart). This member serves as overhead framing equally well in both flat roof and rigid frame structures.

MOORFRAME® also serves as a Locking Rail for the overhead clothes storage system, and is designed for compatibility with Moore Locking Rail Bench Support Units.

LOCKING RAIL BENCH SUPPORT UNITS

Moore prefabricated Locking Rail Bench Support Units are designed to serve from one (1) to four (4) rows of LOCKERBASKETS® on each side of the unit. The pedestal support units are protected with a hot dipped galvanized coating to resist rusting in damp environments. Moore Alumibench, used in accordance with these standards, provides comfortable seating for all employees using the changeroom. It is recommended that bench runs be designed in multiples of 6'-0" (1829 mm) for the most economical use of Alumibench and Locking Rail Bench Support units. Backrests are available.

ROOF LOAD

Roof structure must be designed by a design professional to withstand a 10 psf (49 kg per 1 m²) uniform load caused by LOCKERBASKETS® in addition to roof loads determined from appropriate building codes and local conditions. The design professional also must consider separately the point loads caused by the reaction of the collector rail. Each individual LOCKERBASKET® load should be limited to thirty 30 pounds (13 kg). The collector rail is subject to concentrated loads. The collector rail loads are multiples of the numbers of baskets supported by the collector rail. The structural members supporting the collector rails must be designed accordingly.

FLOOR AREA REQUIREMENTS

For estimating purposes and preliminary layouts, allow 5.5 square feet (.5 m²) of floor area per employee using the changeroom. This allowance covers area requirements for LOCKERBASKETS®, locking rails, benches and aisles, but does NOT include area requirements for lavatory facilities. On the average the total requirements including changeroom, toilet, showers and lavatory will average 8 square feet (.7 m²) of floor area per employee using the changeroom.



MOORFRAME® TECHNICAL DATA

MOORFRAME® AS COLLECTOR RAIL SPAN TABLE

Roof structure must be designed by a design professional to withstand a 10 PSF (49 kg per m²) uniform load caused by loaded LOCKERBASKETS® in addition to roof loads determined from appropriate building codes and local conditions. The design professional must also separately consider the point loads caused by the reaction of the collector rail. Each LOCKERBASKET® load should be limited to 30 pounds.

SPAN		SIMPLE OR DOUBLE SPANS		CONTINUOUS SPANS	
IMPERIAL (Feet)	METRIC (mm)	Total number of rows of Baskets served by collector rail	Max. number of rows of Baskets on one side of collector rail.	Total number of rows of Baskets served by collector rail	Max. number of rows of Baskets on one side of collector rail.
UP TO 8'-0"	UP TO 2440	6	4	8	5
8'-6"	2590	6	3	7	4
9'-0"	2740	5	3	6	4
9'-6"	2900	4	3	6	3
10'-0"	3050	4	2	5	3

ALL SPANS OVER 10'-0" (3050 mm) CONSULT THE MOORE COMPANY, INC.

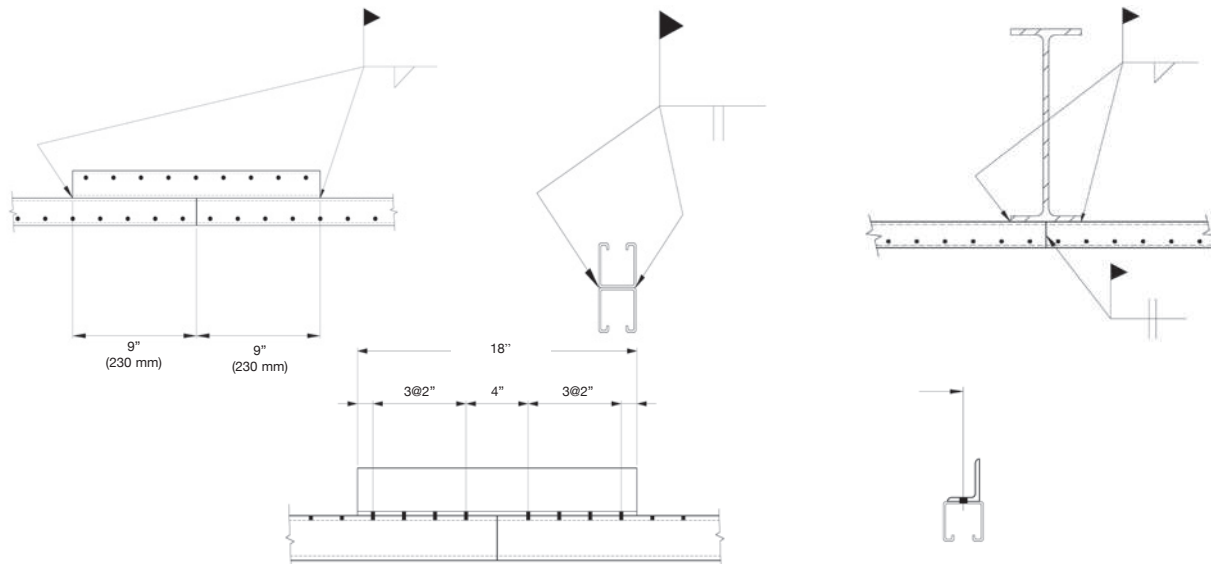
NOTE: When MOORFRAME® is used as a support rail, maximum clear span is 10'-0" (3050 mm)
When MOORFRAME® is used as a collector rail, maximum clear span is 6'-0" (1828 mm)

MOORFRAME® BRIDGING

No bridging is required for clear spans under 8'-0" (2440 mm). Spans over 10'-0" (3050 mm), consult The Moore Company, Inc. Ends of bridging lines must be firmly anchored to walls or attached to structural member.

SPLICING MOORFRAME®

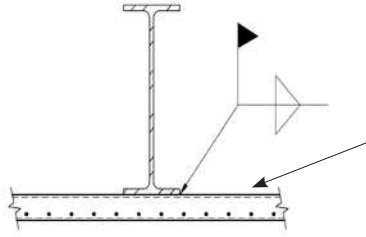
All splicing should be done at a framing support point. Butt sections and weld as shown. Use sufficient amount of 1/8" (3 mm) E70 series welding rods or equal. **All welded or bolted splices should be made at quarter points between supports.**



MOORFRAME® CONNECTING DETAILS

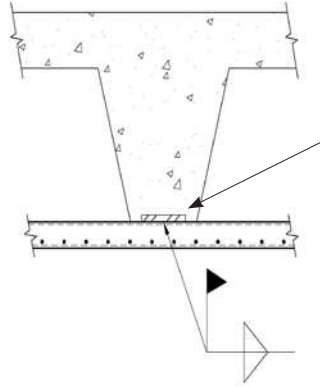
WELDING MOORFRAME® TO STRUCTURE BY:

Welding to structural steel



MOORFRAME® (as collector rail OR Support rail)

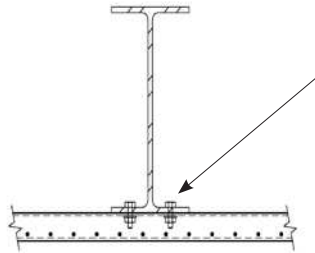
Welding to steel plate embedded in concrete structure



Embedded Steel Plate

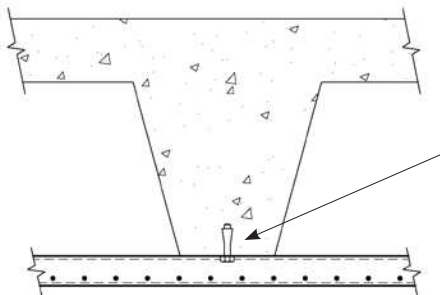
BOLTING MOORFRAME® TO STRUCTURE BY:

Bolting to steel structure



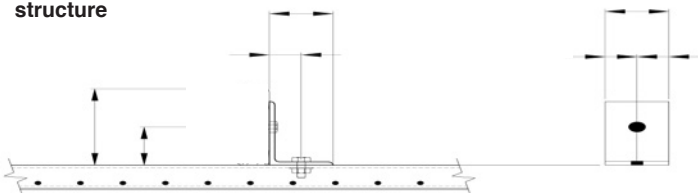
3/8" Bolt with washer and Nut (typical) by others. Drill 7/16" holes in steel and MOORFRAME®.

Bolting to concrete structure



3/8" Hilti Kwik expansion anchor (B/O). Drill 7/16" Holes in concrete and MOORFRAME®.

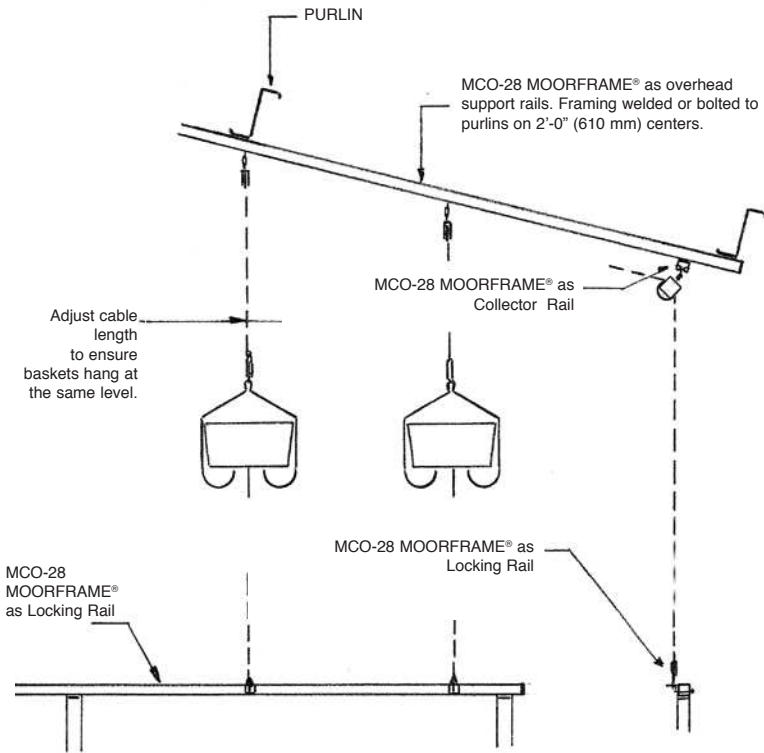
Bolting to wood structure



1. Clip may be fabricated from 1/8" plate or angle by others.
2. Hole in wood must be over half the depth from the bottom to prevent splits.
3. It is the owner's sole responsibility to determine the structural characteristics of the wood joist used and that the location of the connection points for the actual design load of the wood joists are capable of supporting the MOORFRAME® members and LOCKERBASKET® system.
4. All bolts are 3/8" machine bolts with washers and nuts by others.



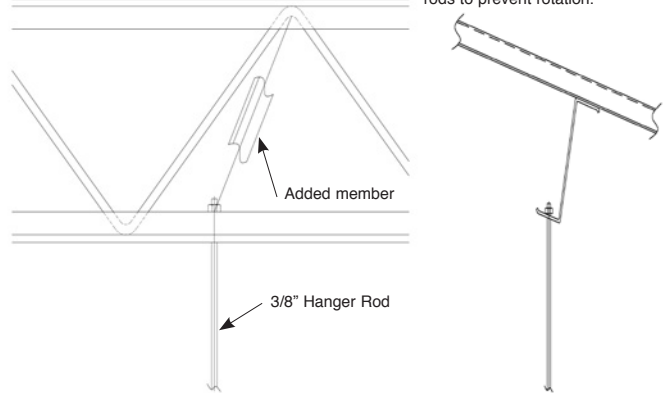
STANDARD ATTACHMENT FOR OVERHEAD FRAMING



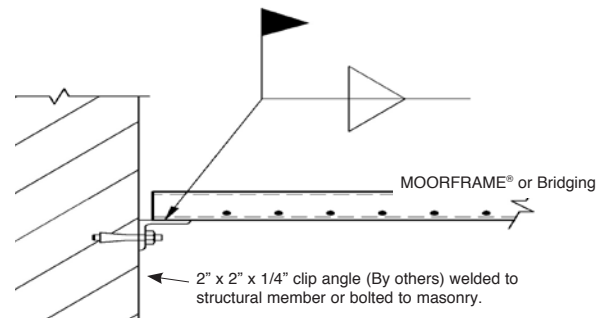
SUSPENDED OVERHEAD FRAMING SYSTEM ATTACHMENT DETAILS

NOTE: If hanger rod is not at a joist panel point, add web member in field.

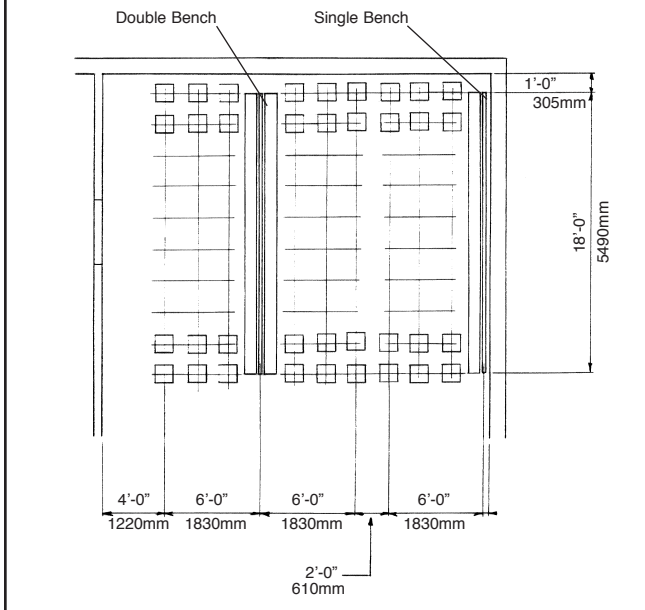
NOTE: Cold rolled purlins must be bridged at hanger rods to prevent rotation.



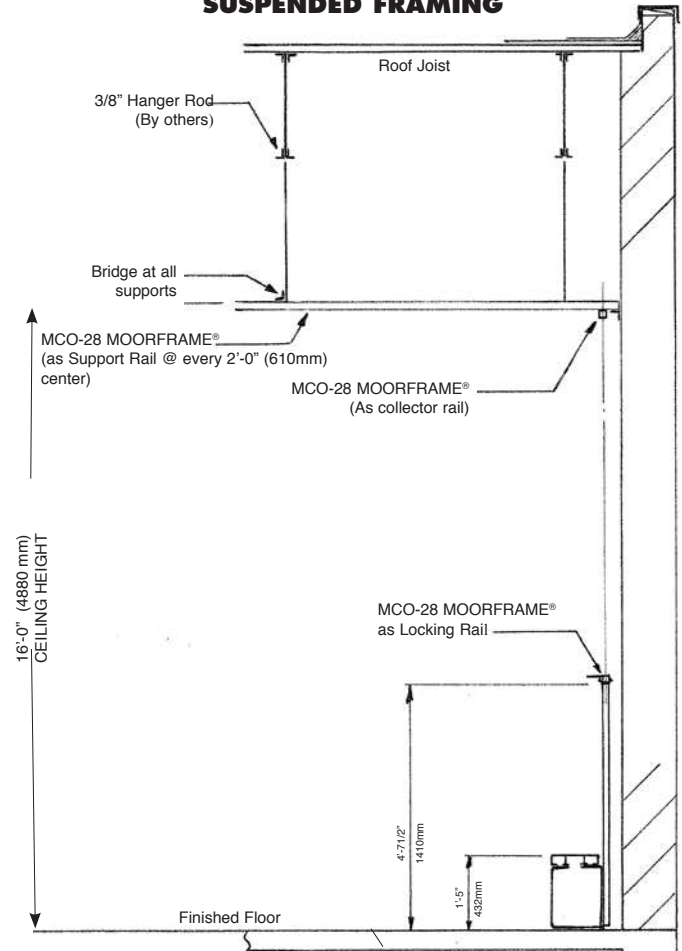
TERMINATION OF MOORFRAME® / BRIDGING AT WALL



TYPICAL LOCKERBASKET® LAYOUT



CROSS SECTION SHOWING SUSPENDED FRAMING



COMBINATION FLOOR LOCKER AND LOCKERBASKET® SYSTEM

Details of common floor locker and LOCKERBASKET® System layouts are provided in subsequent pages of this installation pamphlet. The installation of a combination floor locker and LOCKERBASKET® system generally follows the preceding instructions. Installation instructions for the assembly of wall lockers should adhere to that manufacturer's installation instructions with accommodations being made for the placement of the floor lockers.

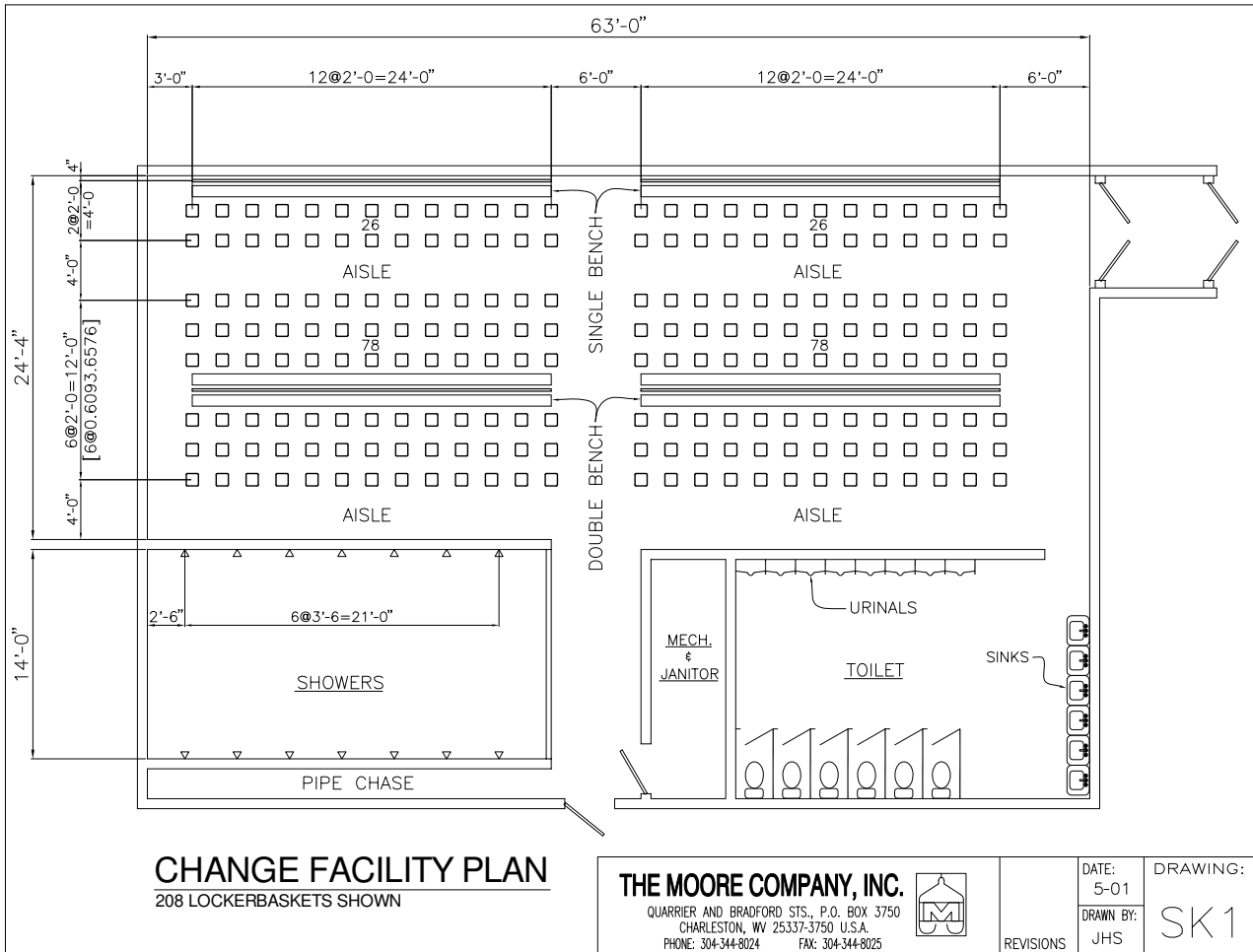
It is important to ensure the architect's layout for the LOCKERBASKET® System does not conflict with existing overhead ducts, structural framing or obstructions. The Moore Company recommends that the installer begin with the installation of the LOCKERBASKET® System before installing the floor lockers. This will provide the installer with maximum flexibility in adjusting for varying field conditions that may already exist. It is also important for the installer to pair the floor lockers and LOCKERBASKETS® closely enough for the assigned employee to conveniently change clothes.

PLAN AND ELEVATION - AND MOORFRAME® LAYOUTS

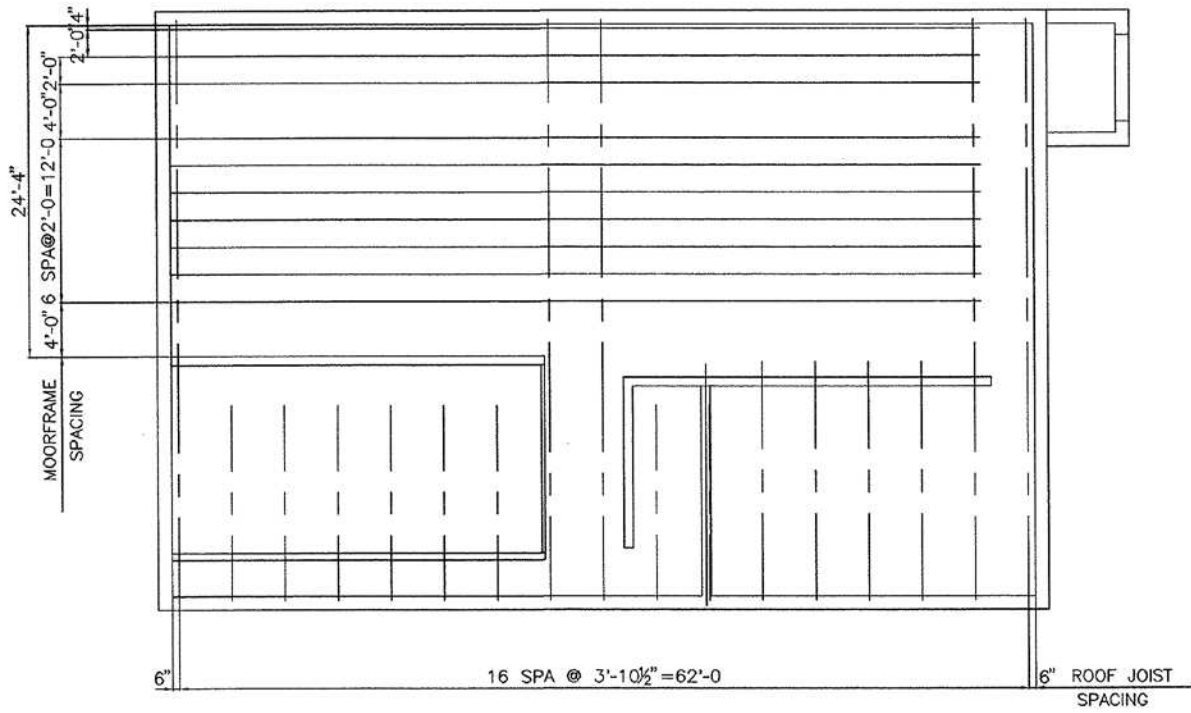
Three examples of a commonly used changeroom design are shown in this section. The first layout provides each employee one basket to securely store their street clothes while working on the job and later to hang their work clothes under the basket to allow fresh dry air to circulate freely through the work clothing rendering them dry for comfortable wear the next day. In this design, the changeroom abuts the lavatory, toilets and shower area. The second layout provides separate LOCKERBASKET® rooms for clean and dirty clothes. The third shows separate rooms featuring LOCKERBASKETS® for dirty clothes and floor lockers for clean clothing.



TYPICAL LOCKERBASKET® LAYOUT PLAN VIEW



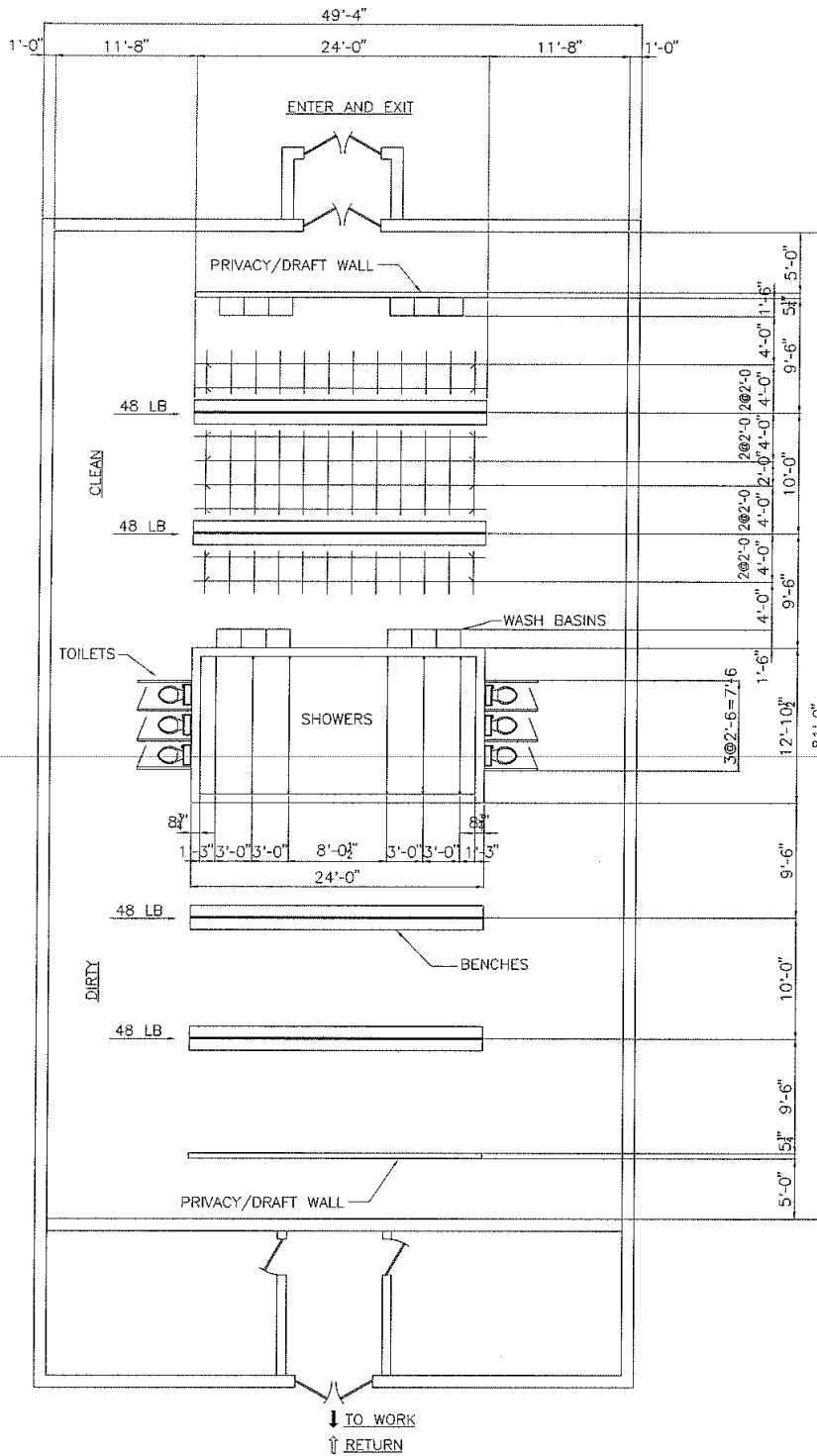
TYPICAL LOCKERBASKET® LAYOUT FRAMING PLAN



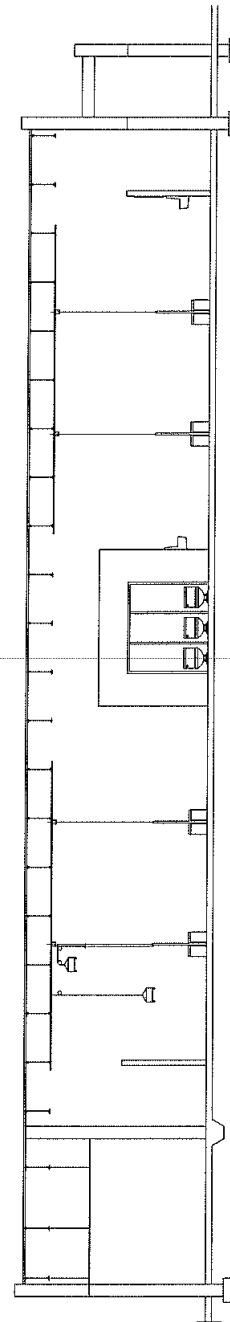
FRAMING PLAN



CHANGEROOM LAYOUT UTILIZING LOCKERBASKETS® IN BOTH CLEAN AND DIRTY AREAS



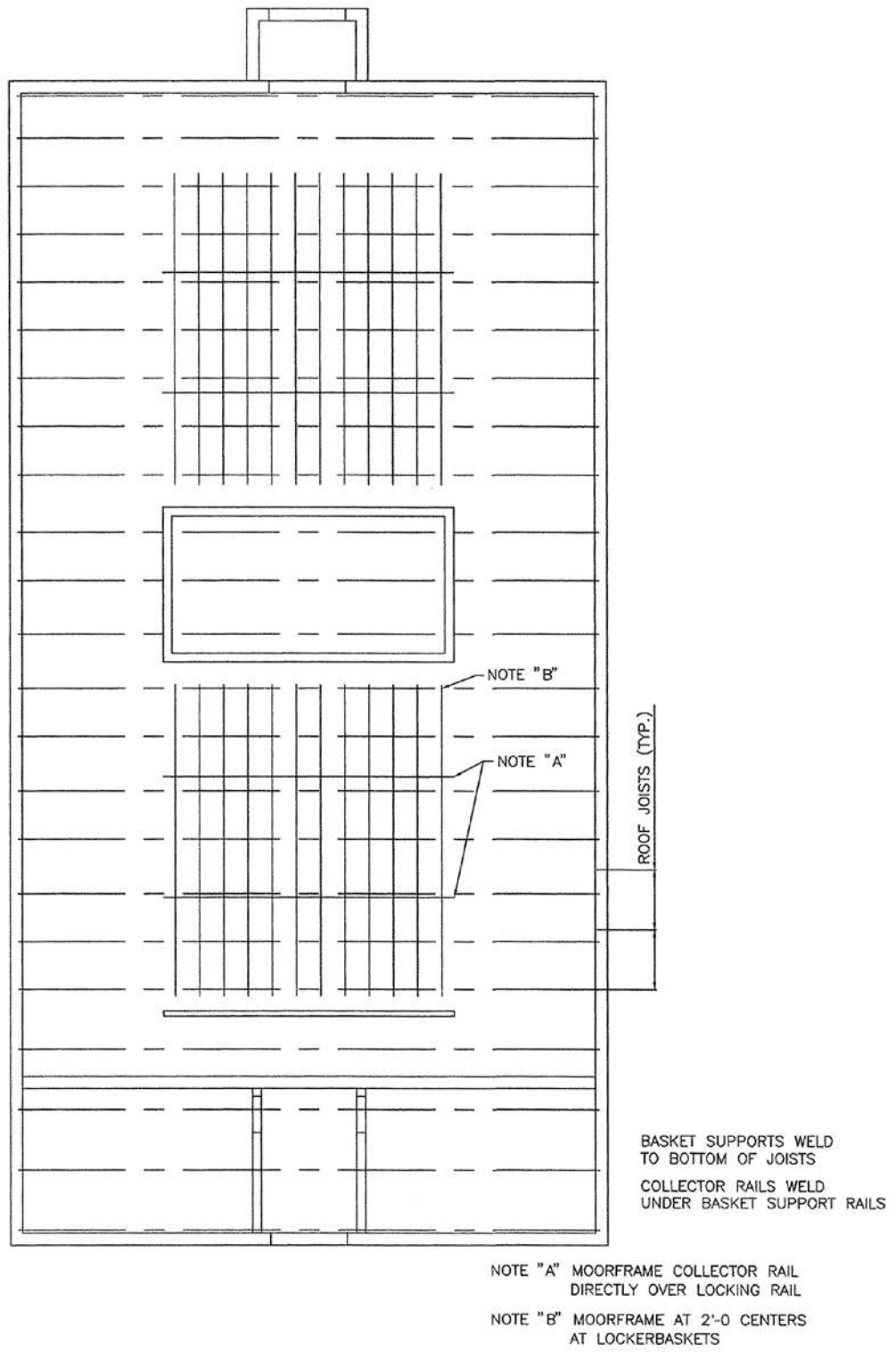
CHANGE ROOM PLAN



ELEVATION



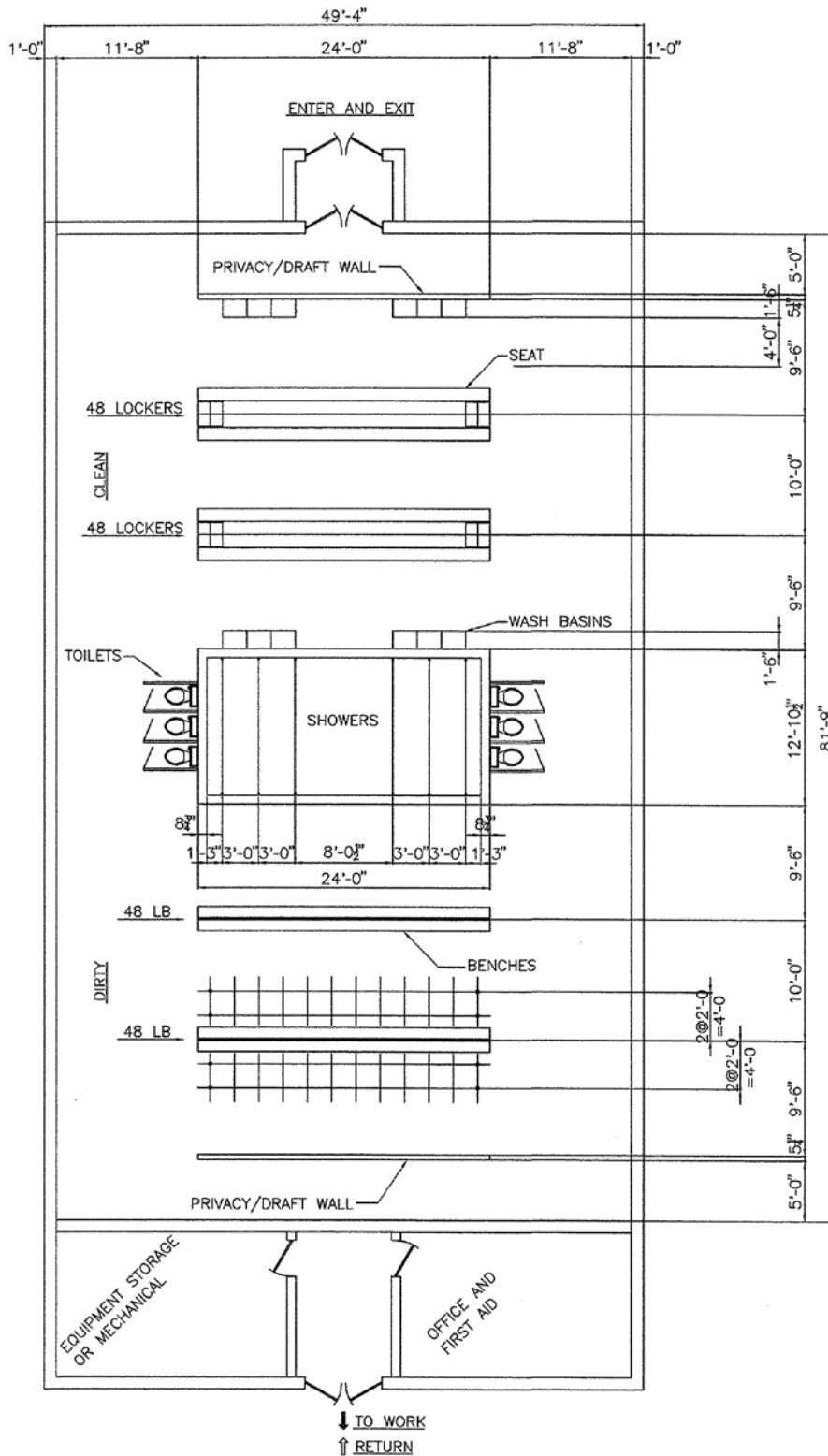
FRAMING PLAN FOR CHANGEROOM UTILIZING LOCKERBASKETS® IN BOTH CLEAN AND DIRTY AREAS



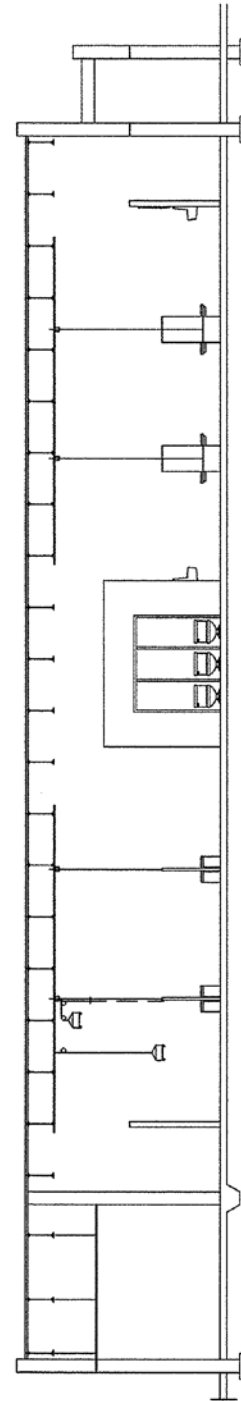
FRAMING PLAN



CHANGEROOM LAYOUT UTILIZING SEPARATE CLEAN (LOCKERS) AND DIRTY (LOCKERBASKET®) AREAS PLAN AND ELEVATION VIEWS



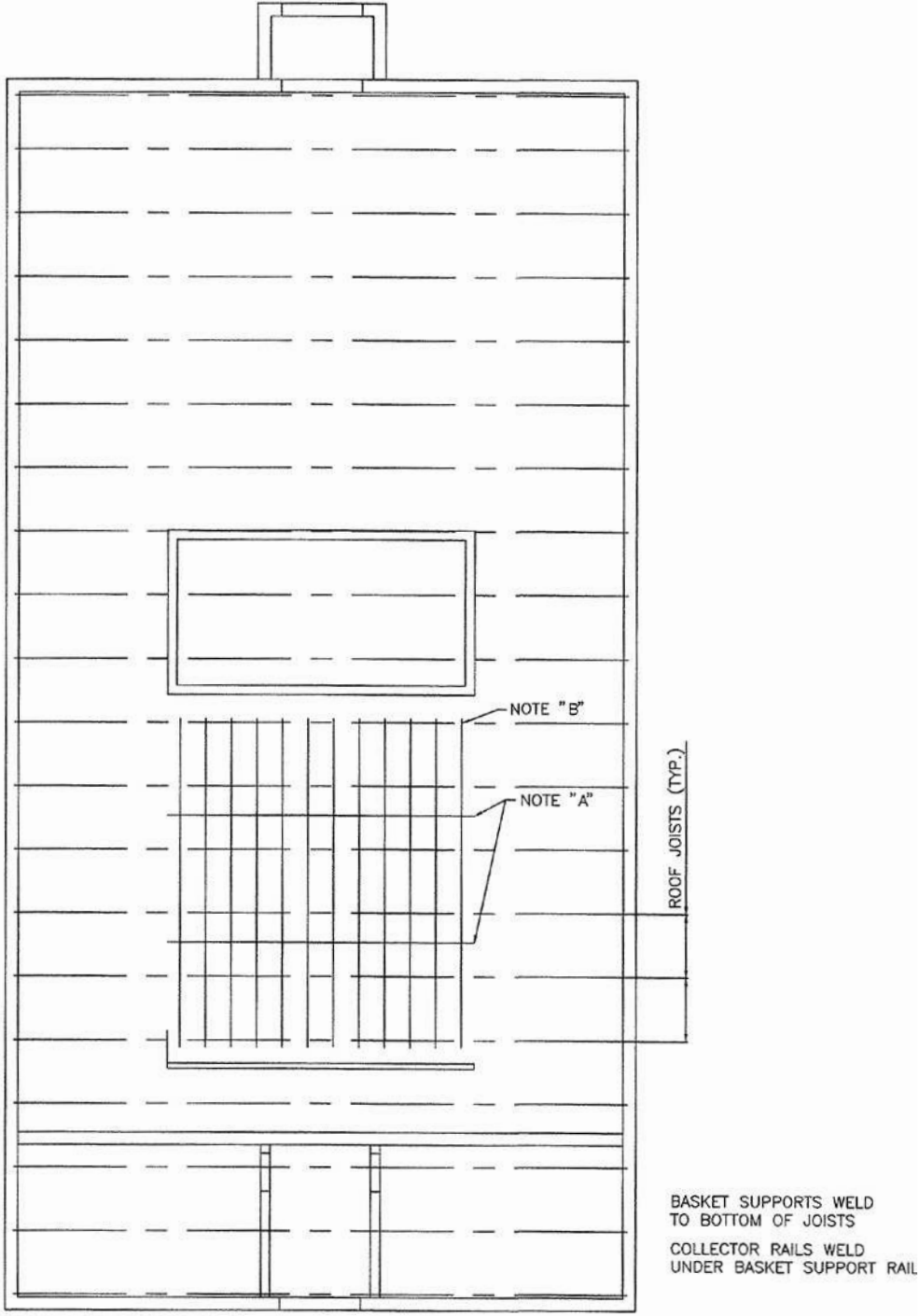
CHANGE ROOM PLAN



ELEVATION



**FRAMING PLAN USING LOCKERS FOR CLEAN SIDE AND
LOCKERBASKETS® FOR DIRTY SIDE**



NOTE "A" MOORFRAME COLLECTOR RAIL
DIRECTLY OVER LOCKING RAIL

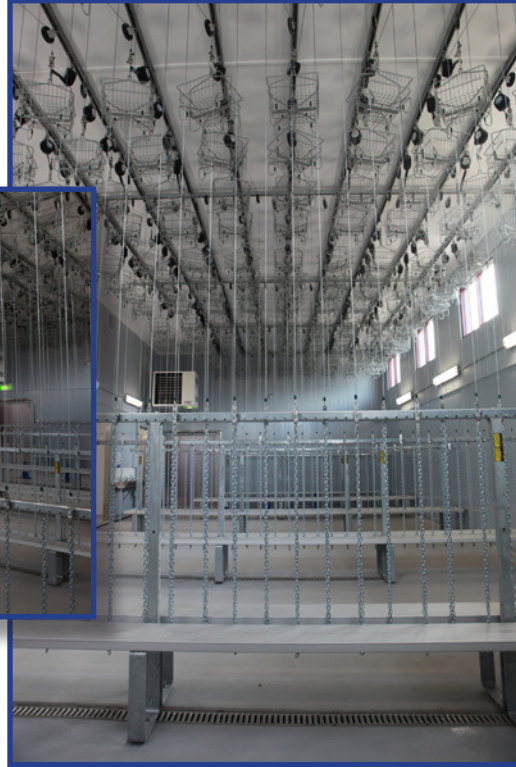
NOTE "B" MOORFRAME AT 2'-0" CENTERS
AT LOCKERBASKETS

FRAMING PLAN





Lockerbasket® changeroom installation with Alumibench®.



Lockerbasket® changeroom installation with floor lockers.



USING MOORE LOCKERBASKETS® WITH FLOOR LOCKERS

LOCKER/LOCKERBASKET® DESIGN COMBINATION

LOCKERBASKETS® may be used in combination with floor lockers. Detailers may choose to operate the LOCKERBASKETS® using the standard locking rail bench design, from within or from the face of the floor locker using the MS-80 locker operating equipment package.

It is more economical to position the overhead collector and support rails so they run parallel to the row of lockers they serve.

Ensure that common locker sizes are used and that you have allowed adequate space for both systems. In a locker/LOCKERBASKET® combination layout, it is very important to avoid interference with overhead objects such as structural beams and duct work. It is best to present the structural engineer with the changeroom layout out first and have the structural engineer design around the locker/LOCKERBASKET® layout.

Instruct the Owner to assign lockers for each shift evenly throughout the changeroom and in a manner that maximizes individual employee changing area. This will ensure that the locker and LOCKERBASKET® operation does not interfere with employee changing.

As a guide for the Design Professional, the following drawings are some recommended changeroom design patterns. The checkerboard pattern layout is normally employed, providing an attractive and convenient layout, combined with the most efficient use of space.

Because of the different sizes of floor lockers that can be specified, we have chosen to provide details for various Locker/LOCKERBASKET® options based on 1'0x1'0 floor lockers. We suggest starting by making the following choices:

1. Choosing an appropriate size floor lockers for the changeroom facility
2. Determine if you want the LOCKERBASKETS® to be operated from the floor lockers or from a standard Moore Locking Rail System.
3. Determine if the floor lockers should be positioned on a 4" base and use the standard Locking Rail System for operating the LOCKERBASKETS® (see page 20)

OR operating the LOCKERBASKETS® from the floor locker using a free standing bench (see page 21).

OR a popular design is to anchor the floor lockers on top of a 1'-6" base and operate the LOCKERBASKETS® from the floor lockers while incorporating the bench system into the raised base (see page 22). Also see page 23 for details of a cantilevered bench support for raised floor locker installation.

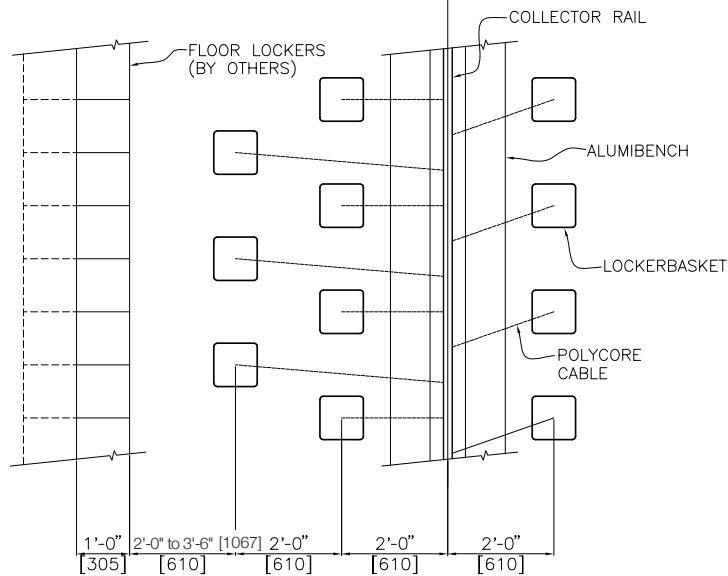
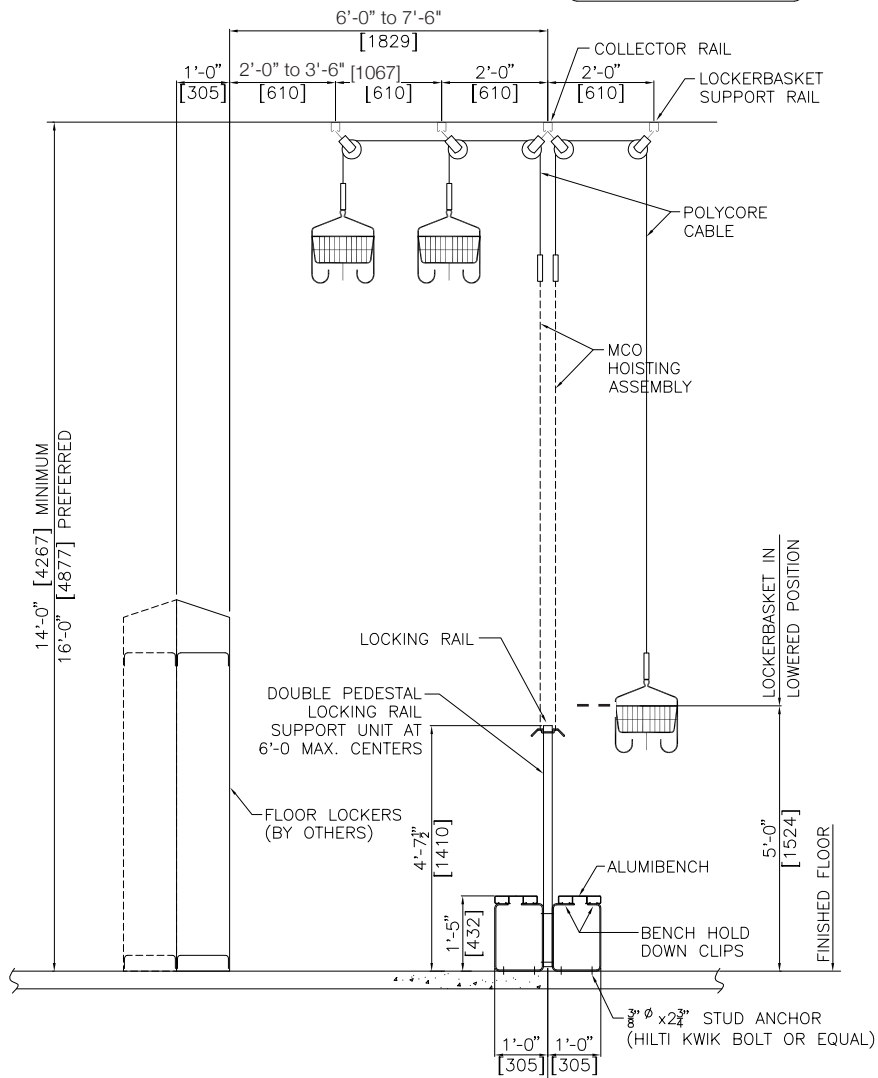
When incorporating floor lockers with LOCKERBASKETS®, we recommend that only one or two rows of LOCKERBASKETS® be used to provide the most efficient and user friendly design.

These basic designs, which employ the best changeroom practices, may be altered to suit the individual room requirements and best utilize the available space.



MS-10 STANDARD LOCKERBASKET® LAYOUT WITH STAND ALONE LOCKERS

THE LOCKING, COLLECTOR AND SUPPORT RAILS ARE MOORFRAME.

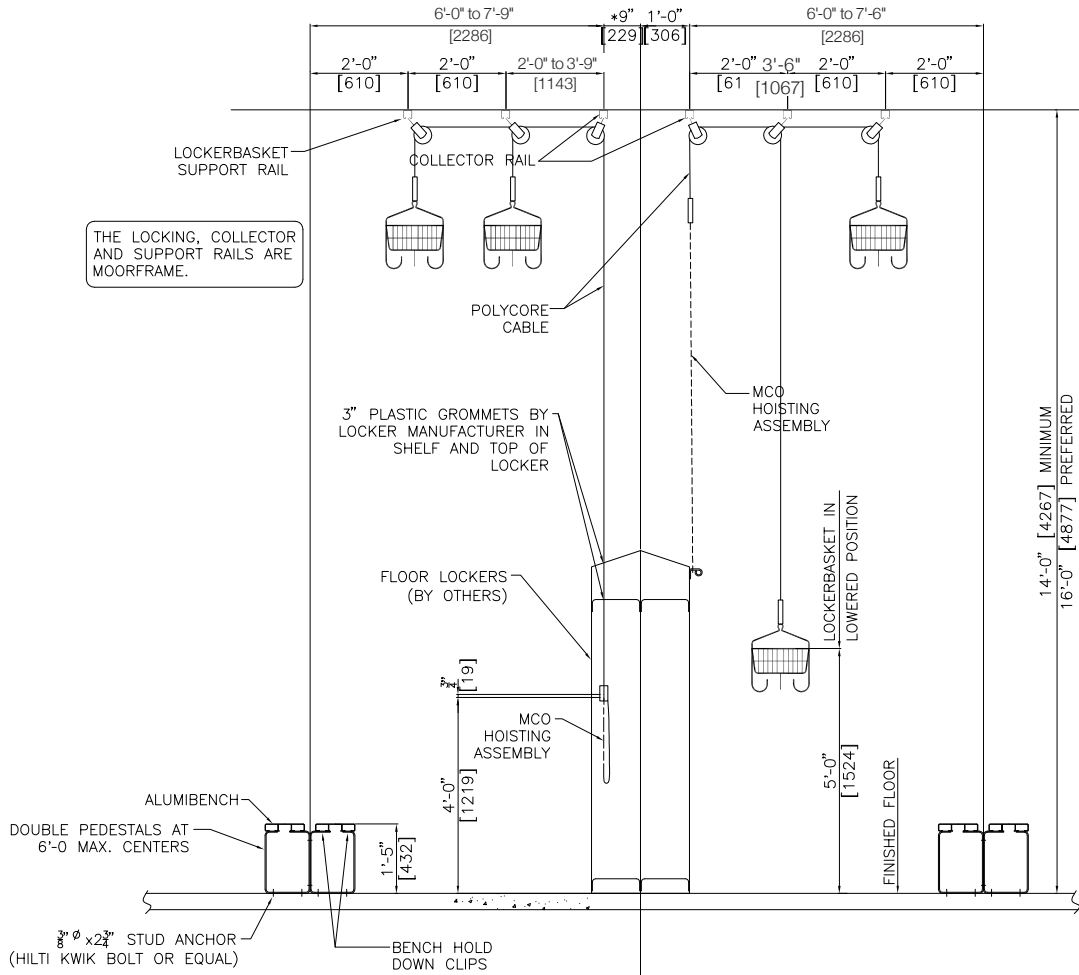


PLAN VIEW



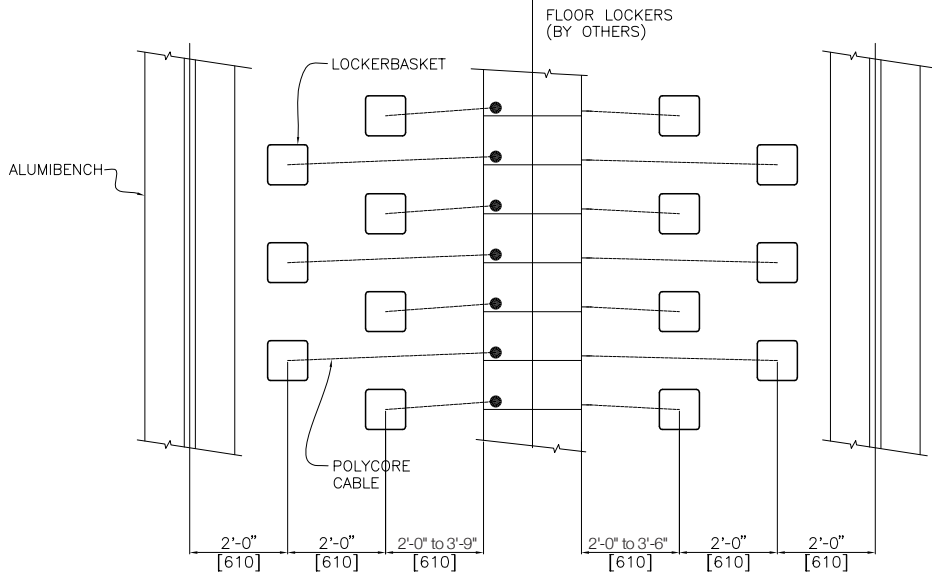
MS-80 LOCKER OPERATED SYSTEM WITH FREE STANDING PEDESTAL BENCH SUPPORTS

*DIMENSION VARIES WITH
DEPTH OF LOCKER.
9" FOR 12" LOCKER,
12" FOR 15" LOCKER



**OPERATION FROM
WITHIN LOCKER**

**OPERATION FROM
EXTERIOR JAMB**

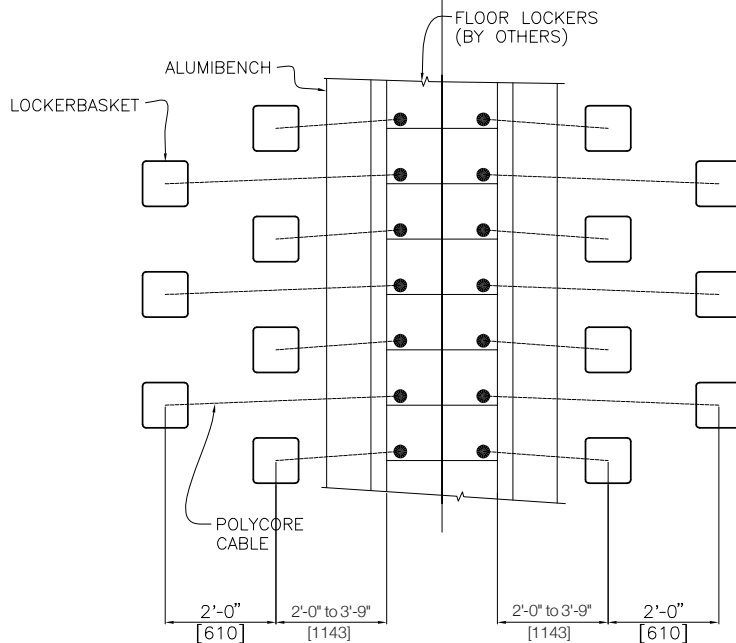
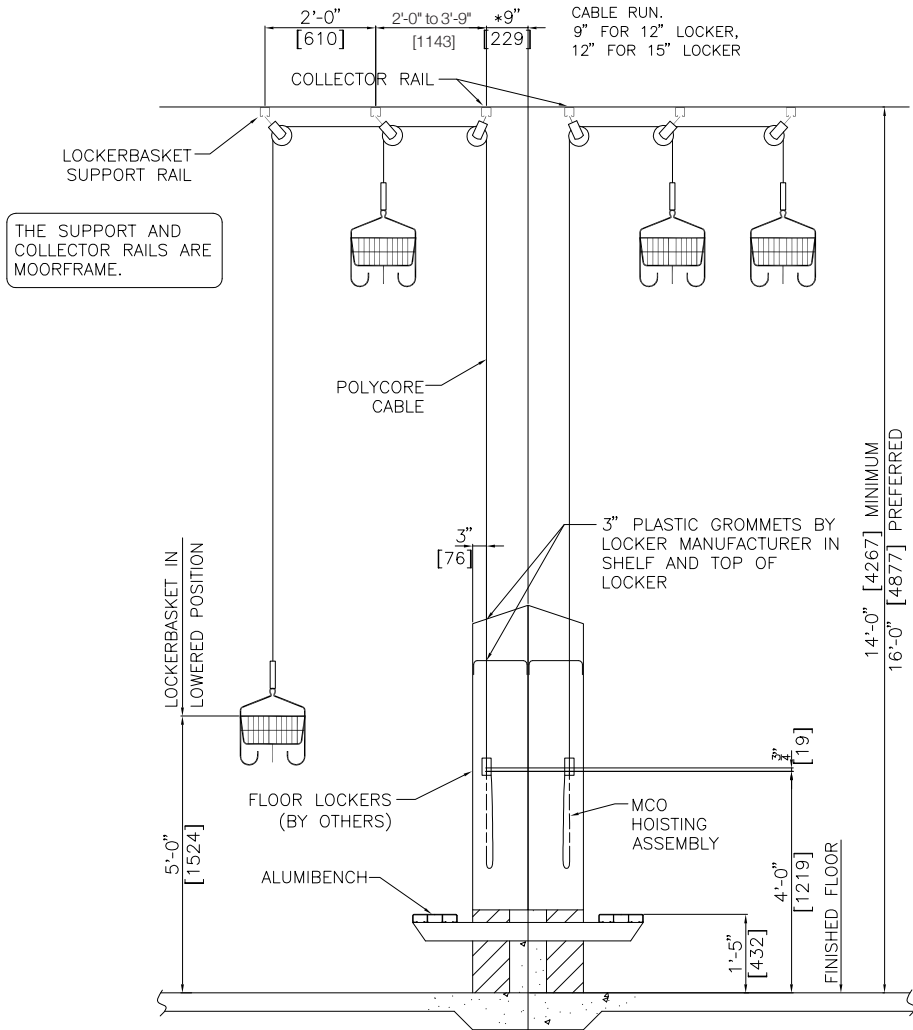


PLAN VIEW

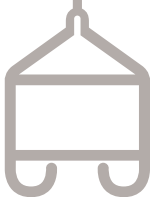


MS-80 LOCKER OPERATED SYSTEM – PEDESTAL MOUNTED

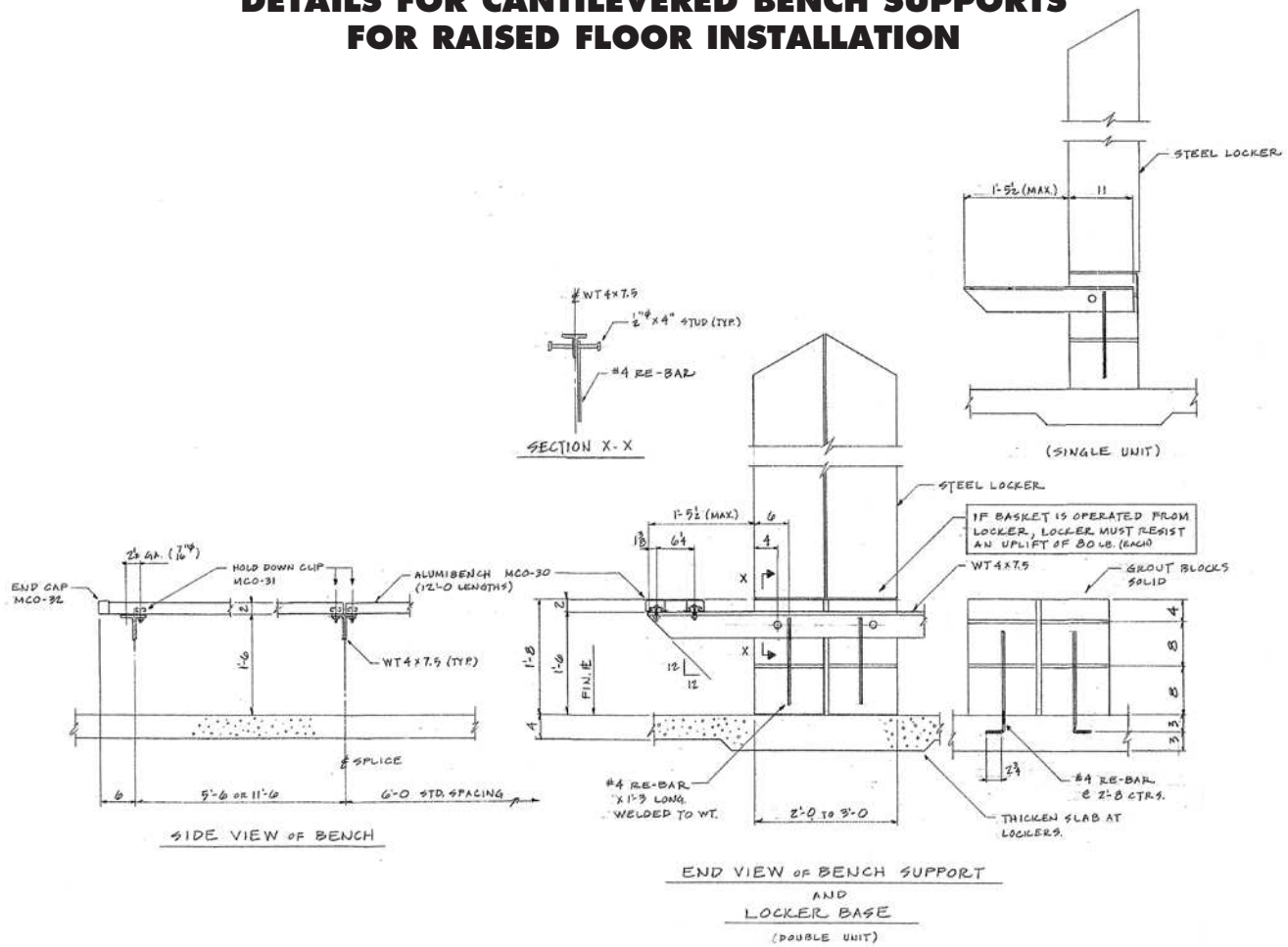
*DIMENSION VARIES WITH DEPTH OF LOCKER TO MAINTAIN VERTICAL CABLE RUN.
9" FOR 12" LOCKER,
12" FOR 15" LOCKER



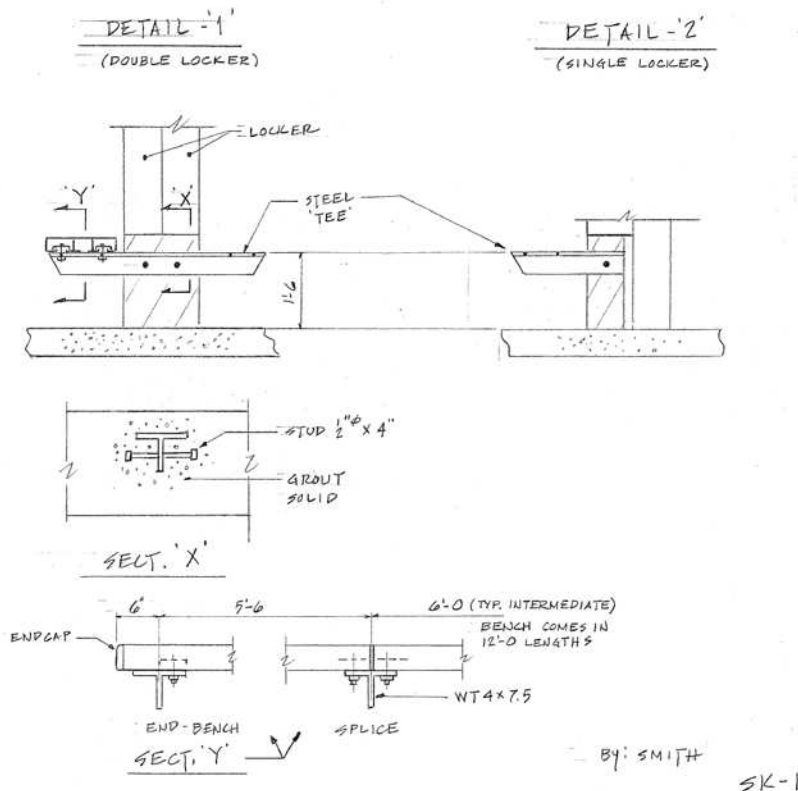
PLAN VIEW



DETAILS FOR CANTILEVERED BENCH SUPPORTS FOR RAISED FLOOR INSTALLATION



ALTERNATE DETAIL FOR CANTILEVERED BENCH INSTALLATION



CHANGEROOM LAYOUT PROCEDURES USING AUTOCAD OR DOT MATRIX LAYOUT

AutoCAD or a similar program is ideal for layout of a changeroom. You may wish to use the following Dot Matrix to organize your thoughts on how best to approach the layout for your changeroom. While the methods you will use may vary, the logic approach remains the same. Sample layouts are shown on preceding pages of this Design Manual to assist you.

The layout of a changeroom employing a Moore Overhead Clothes Storage System is simplified by using a scale 2'-0" (610 mm) grid sheet or use SNAP in AutoCAD to help locate the walls and other physical boundaries affecting the layout.

1. Note ceiling beams, joists or other roof support members.
2. Locate ceiling beams, joists or other roof support members. Note direction of Joists or Purlins.
3. Note the perimeter or overhead lighting fixtures. Perimeter lighting is ideal.
4. Note HVAC system including duct work. It is best to locate the duct work over the aisles.
5. Locate doors for ingress or egress, and interior obstacles.
6. Locate locking rail-bench units. Where a locking rail-bench unit is desired, ELIMINATE one row of module dots and substitute the locking rail-bench unit, maintaining the 2'-0" module. NOTE: Alumibench® is extruded into 12'-0" (3660 mm) sections and designed for maximum spans of 6'-0" (1830 mm). For the most economical layout, the Alumibench® rows should be designed using spans in multiples of 6'-0" (1830 mm).
7. Where an aisle is desired, ELIMINATE one row of module dots, leaving a 4'-0 (1219 mm) wide aisle. Eliminating two rows of module dots will give you a 6'-0 (1830 mm) wide aisle.
8. EACH REMAINING MODULE DOT SIGNIFIES THE CENTER POINT /LOCATION OF AN INDIVIDUAL LOCKERBASKET®. AutoCAD users may wish to replace dots with a square placed directly over the dot to signify a LOCKERBASKET® location. Refer to MOORFRAME® Span Tables to calculate maximum number of LOCKERBASKET® rows per side of Collector Rail.
9. Ensure that the ceiling height in LOCKERBASKET® area (bottom cord of joist to the finished floor is 16'-0)



LONG/SHORT FORM SPECIFICATIONS

STANDARD LOCKERBASKET® SPECIFICATIONS

September 30, 2014

SHORT FORM

LOCKERBASKET® overhead clothes storage system comprising of a wire basket and hanger, cable-chain operation, standard operating equipment and 4'-0" MOORFRAME® per unit, bench and bench support units as manufactured by The Moore Company, Inc. P.O. Box 3750, Charleston, WV 25337 USA (O) 304-344-8024 (F) 304-344-8025 agalan@moorecompany.com, www.moorecompany.com in quantities in accordance to Architectural layouts.**

Installation: System to be installed in accordance with The Moore Company, Inc.'s details and instructions and all applicable Codes, Regulations and Laws.

**OPTIONAL: Furnish one (1) master keyed Moore six slide tumbler padlock per LOCKERBASKET®.

LONG FORM

Overhead Clothes Storage System shall be as manufactured by The Moore Company, Inc. P.O. Box 3750, Charleston, WV 25337-3750 USA (TEL) 304-344-8024. (FAX) 304-344-8025, email info@moorecompany.com or agalan@moorecompany.com to the following specifications:

LOCKERBASKET®

DIMENSIONS:

14" by 14" wide by 6.25" deep (350 mm by 350 mm wide by 159 mm deep)

MATERIALS OF CONSTRUCTION:

Number 12 gauge steel wire welded to 4 gauge steel rod frame. All wire intersections individually welded. Entire basket and accessories finished in light gray epoxy powder coating after fabrication.

CONSTRUCTION:

Baskets to have no interior obstructions, and designed to slide vertically within the hanger-hook assembly.

COAT-HOOKS:

Six-(6) Hook unit, fabricated from 5/16 inch rod with rounded tips, and vinyl tip guards, designed with integral stops on vertical portions for easy access to hooks.

GARMENT HANGER:

Fabricated from No. 7 gauge wire, finished in light gray epoxy powder coating after fabrication, with two vertical supports each affixed to bottom of LOCKERBASKET® with an integral hinge.



STANDARD OPERATING EQUIPMENT WITH MOORFRAME® PER LOCKERBASKET®

- 16 **Feet of Moore 1/8” galvanized steel preformed polycore cable**, for operation over pulleys in a standard design of an average 16’-0” (488 cm) ceiling height in changeroom area. Cable is designed for 1,400 lbs. tensile strength and a 288 lbs working load.
- 1 **Chain hoisting assembly** consisting of one (1) 3½ inch long combination swivel and locking plate fabricated from 13 gauge stainless steel plate chrome plated after fabrication, and one (1) quick link for attaching to nine (9) Feet of Moore chain. Chain designed for 2,200 lbs. tensile strength, 465 lbs working load.
- 2 **Moore Aluminum Duplex serving sleeves**, vinyl sleeve guards and galvanized thimbles for cable assembly.
- 2 **Dual action swivel pulleys** with 4³/₈ inch, self-lubrication black Delrin sheave designed with cable nesting groove and high sidewall sheave. Pulley housing fabricated from 16-gauge stainless steel and chrome plated after fabrication.
- 2 **¼ inch U-bolts and nuts** (for use with MOORFRAME® Supports), zinc plated after fabrication.
- 1 **Anchor Hook Assembly** (for anchoring and locking LOCKERBASKET® to locking rail), complete with anchor hook, hook bolt, retainer disc and hex nut, all zinc plated after fabrication.
- 1 **Adhesive number tags** furnished on sheets sequentially numbered and sized to conform to Anchor Hook.
- 4’-0” **MOORFRAME®** (for overhead supports for suspending LOCKERBASKETS® on standard c/c spacing of 2’-0” (610 mm) and locking rail) cold rolled from galvanized high strength steel, prepunched on 2” centers, designed for overhead spans up to 10’-0”. Black Zytel plastic end caps to be furnished for MOORFRAME® locking rails. Shipped in 18’-0” lengths.



ACCESSORIES PER LOCKERBASKET®

Necessary footage of Moore ALUMIBENCH® 9 ½” wide, 1 ¾” side rails, shipped in 12’-0” lengths, anodized. Shipped in stock 12’-0” lengths.

Necessary number of Moore Locking Rail and Bench Support Units, complete with locking rail anchor bolts and hold down clip assemblies. Furnish double and/or single bench units as required. Locking Rail Supports finished in light gray powder coating and Bench Support Units galvanized after fabrication.

1 Moore solid pressure cast Padlock, six-tumbler mechanism, master keyed.

1 Descent Control Device with galvanized steel basket coupler with swivels.

PERFORMANCE TESTS: Manufacturer shall submit, on request, performance tests for operating parts of clothes storage system.

INSTALLATION: System to be installed in accordance with The Moore Company, Inc.’s details and instructions and all applicable Codes, Regulations and Laws.

**** OPTIONAL:** Furnish one (1) master keyed Moore six slide tumbler padlock per LOCKERBASKET®.

- Materials for connecting overhead supports to structural frame and bench support pedestals to floor are supplied by others.
- The Moore Company, Inc. may substitute components of similar or greater quality.
- The Moore Company, Inc. has no responsibility for products supplied by others or for changes, substitutions, deletions or modifications made to the LOCKERBASKET® system or for any installation or maintenance not in accordance with The Moore Company, Inc.’s Specifications, Installation Instructions, Operating and Service Instructions, and bulletins.
- Owner and its design professionals and installers bear all responsibility for the proper installation use and maintenance of The Moore Company, Inc. LOCKERBASKET® clothes storage system in accordance with Specifications, Installation Instructions, Operating and Service Instructions and bulletins, all applicable laws, ordinances, regulations & codes.
- Owner and its design professionals and installers are responsible for ensuring that the structure is properly designed and constructed for The Moore Company, Inc. LOCKERBASKET® overhead clothes storage system.



P.O. Box 3750, Charleston, WV 25337-3750

Phone: 304-344-8024

Fax: 304-344-8025

www.moorecompany.com

email: info@moorecompany.com or

agalan@moorecompany.com

© The Moore Company 2014

