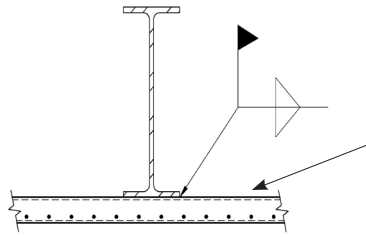


MOORFRAME CONNECTING DETAILS

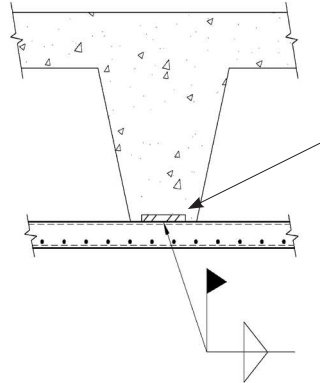
WELDING MOORFRAME TO STRUCTURE BY:

Welding to structural steel



MOORFRAME (as collector rail OR Support rail)

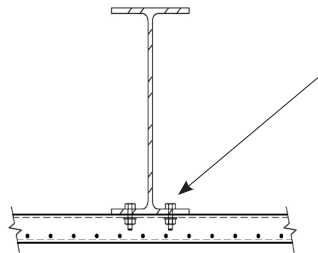
Welding to steel plate embedded in concrete structure



Embedded Steel Plate

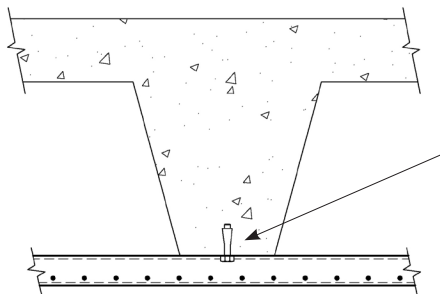
BOLTING MOORFRAME TO STRUCTURE BY:

Bolting to steel structure



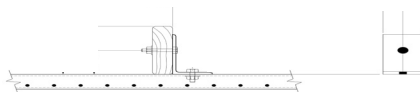
3/8" Bolt with washer and Nut (typical) by others.
Drill 7/16" holes in steel and MOORFRAME.

Bolting to concrete structure



3/8" Hilti Kwik expansion anchor
(B/O). Drill 7/16" Holes in concrete and
MOORFRAME.

Bolting to wood structure



1. Clip may be fabricated from 1/8" plate or angle by others.
2. Hole in wood must be over half the depth from the bottom to prevent splits.
3. It is the owner's sole responsibility to determine the structural characteristics of the wood joist used and that the location of the connection points for the actual design load of the wood joists are capable of supporting the MOORFRAME members and LOCKERBASKET system.
4. All bolts are 3/8" machine bolts with washers and nuts by others.